

NĚKOLIK MÍST PRO UMÍSTĚNÍ CÍVKY MAGNETICKÉHO PULSERU

EASY LOCATION OF LYMPH NODES FOR PREFERRED HYPOTHETICAL MAGNETIC PULSING SITES

JAN. 10, 1997 Revision. Copyright © 1997 Robert C. Beck, D.Sc.

Press either flat side of coil tightly into skin and "flash" each site three to five pulses daily after "ready" lamp lights.

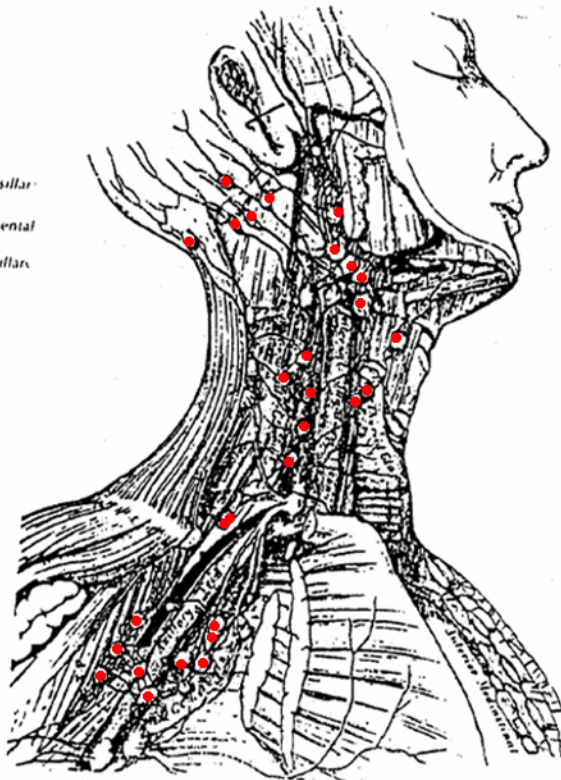
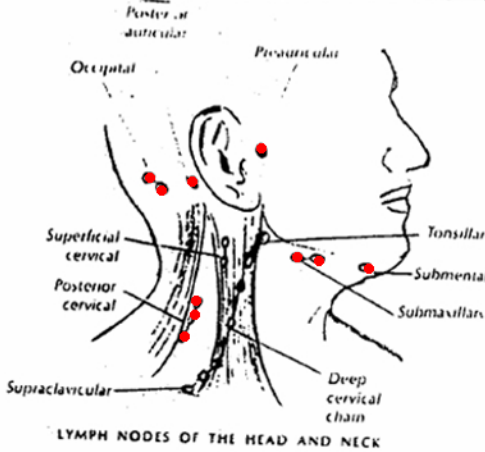


FIG. 35.—The deep lymphatics and glands of the neck and thorax.

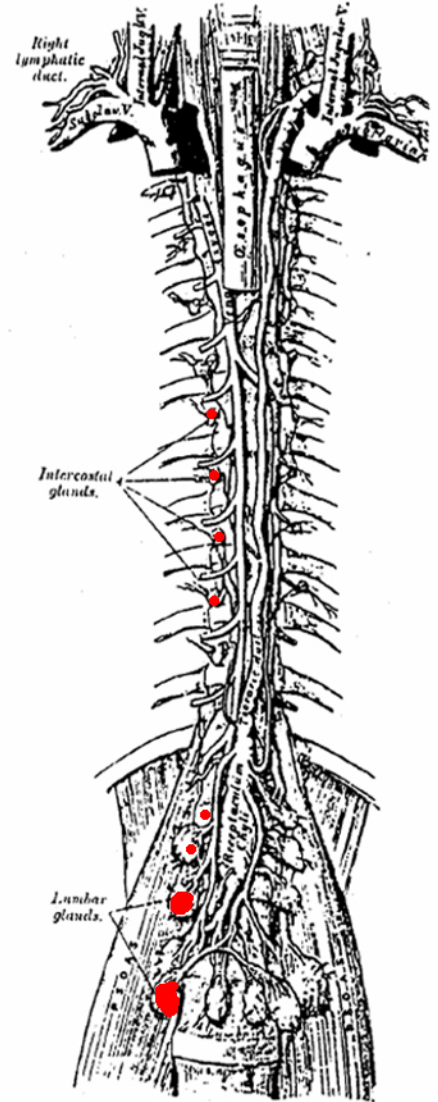
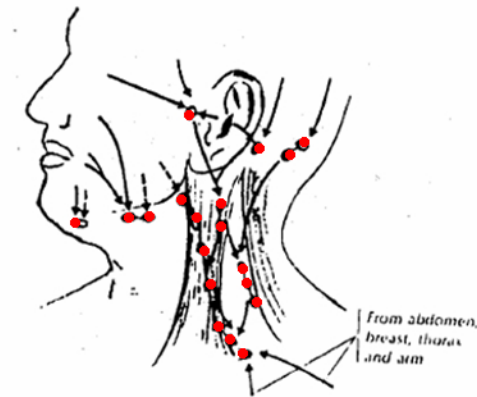
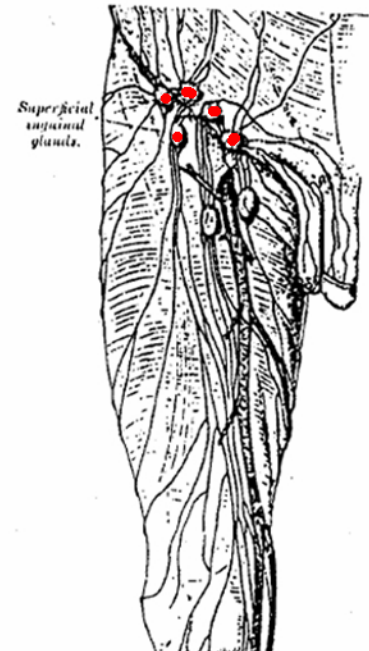
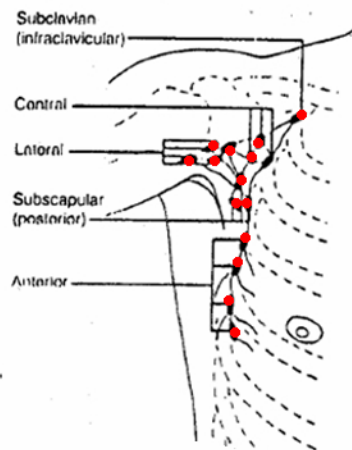
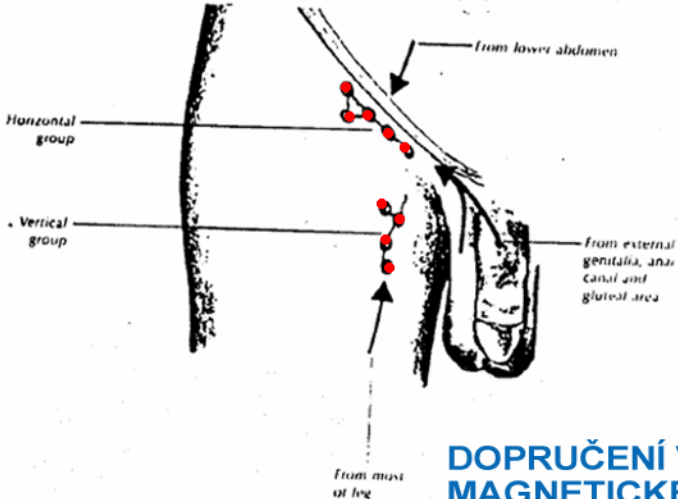
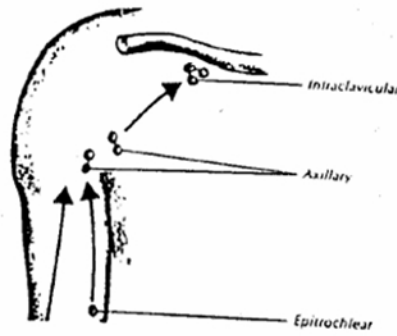
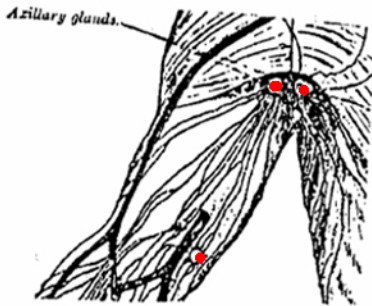


FIG. 37.—The thoracic and right lymphatic duct.



← External lymphatic drainage
 - - - Internal lymphatic drainage (e.g. from mouth and throat)

LYMPHATIC DRAINAGE OF THE HEAD AND NECK



**DOPRUČENÍ VÝROBCE
 MAGNETICKÉHO PULSERU MPG30
 PODLE DR. BECKA
www.becktechnology.cz**